

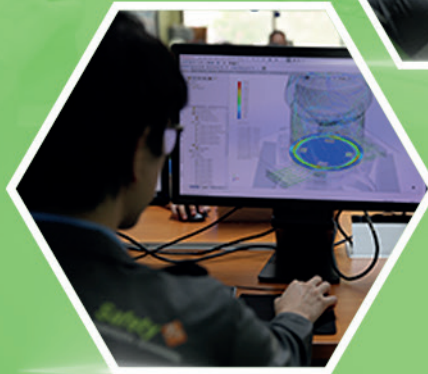


**ASSESSMENT
& CONSULTANCY**

**NOZZLE RING
MODIFICATION**

**SUB-ROLLER
MODIFICATION**

**GRINDING
SOLUTION**



GRINDING SOLUTION

Improve mill's performance and machine reliability with grinding solution for raw mill and cement mill designed by EPS professional team in collaboration with "UBE" a world class industrial machinery provider and a pioneer in grinding process.



With strong plant improvement and modification background from cement industry for over 20 years, EPS aims to help our customers in delivering the highest quality products with the greatest efficiency



**IMPROVE
PRODUCTIVITY**
Efficiency
by 5 – 10%



**REDUCE
PRODUCTION
COSTS**
by 3 – 5%



**REDUCE
POWER**
Consumption
by 1.5 – 3%

Our services



UBE

NOZZLE RING MODIFICATION

Redesign nozzle ring to adjust gas profile of raw mill



UBE

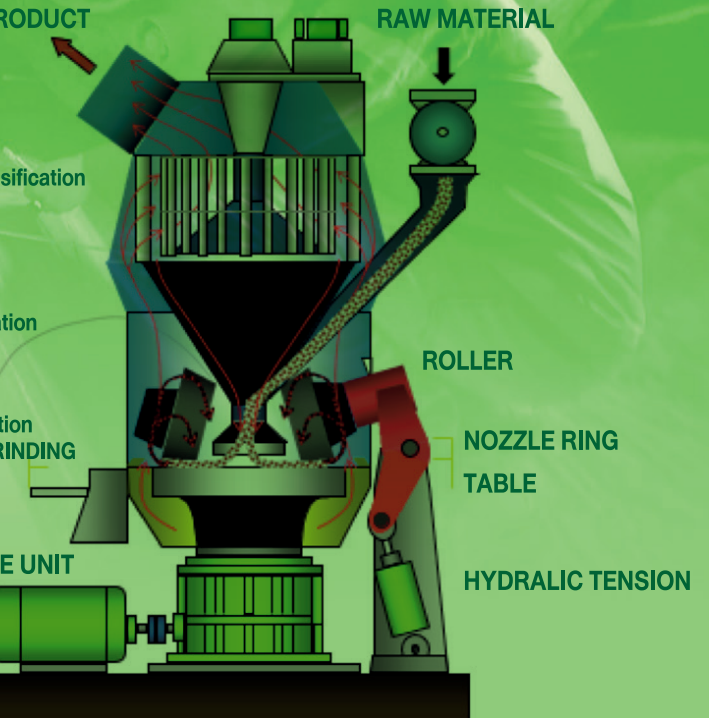
SUB ROLLER MODIFICATION

Modify sub-rollers according to EPS and UBE's design concept to increase productivity, improve product quality and mill stability by reducing water spray consumption of vertical cement mill



ASSESSMENT & CONSULTANCY

Assess the current operational performance and propose improvement plan



ENGINEERING DESIGN AND EXECUTION

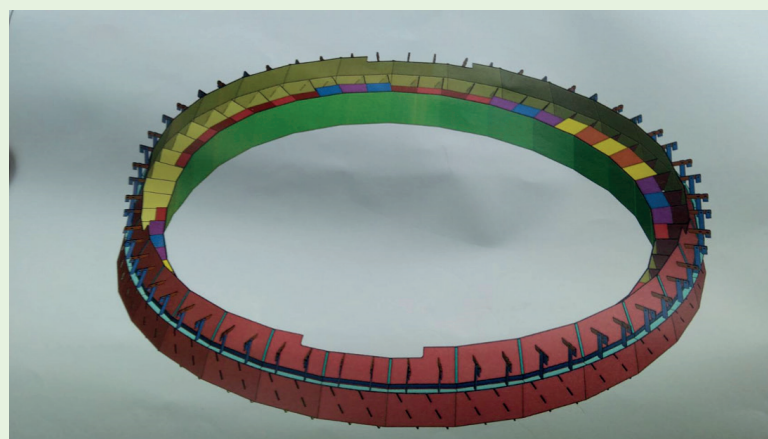
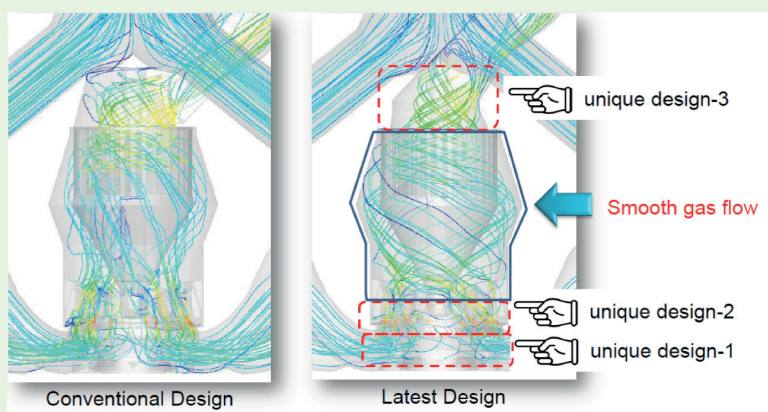
for new EPC project or project modification

Solution Package

▶ Nozzle Ring Modification

Scope of Work

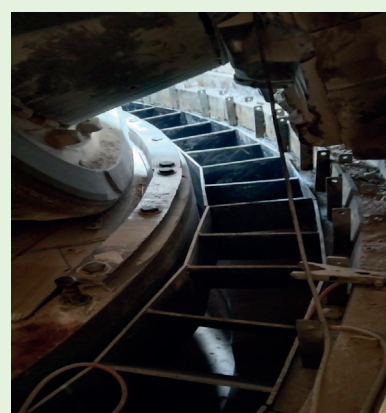
- Assess the current operational performance
- Optimize gas velocity and adjust gas profile in the mill
- Install new nozzle ring



| Package | Starting Price (USD)* |
|--------------------------|-----------------------|
| Nozzle Ring Modification | 150,000 |

**Remark : depending on site condition and mill type*

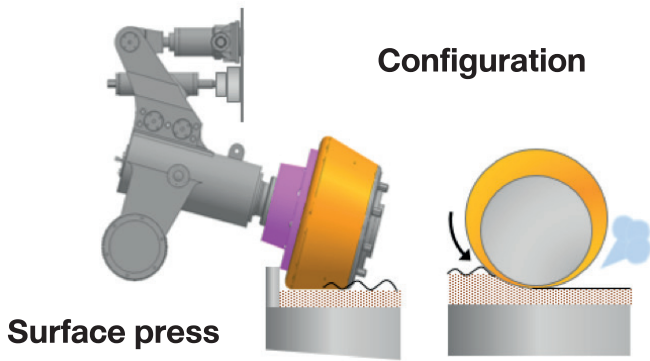
Nozzle Ring Implementation



► Sub-Roller Modification

Scope of Work

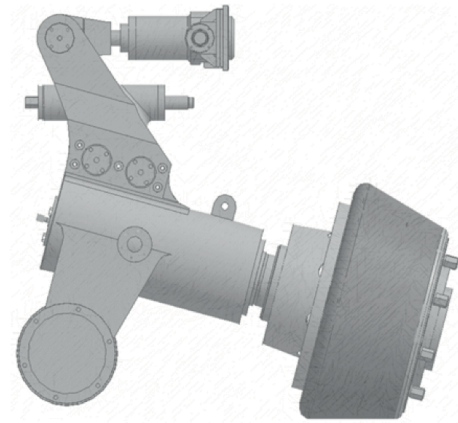
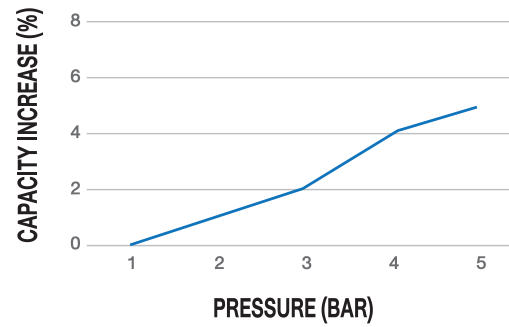
- Assess the current operational performance
- Install new modification parts
- Install new stopper and roller tyre
- Modify electrical interlocking system



| Package | Starting Price (USD)* |
|-------------------------|-----------------------|
| Sub-Roller Modification | 400,000 |

**Remark : depending on site condition and mill type*

RESULTS WITH DIFFERENT PRESSURIZE SUB-ROLLER



- Increased mill capacity
- Decrease power consumption of main drive and fan
- Decrease water Consumption

Additional Service : Assessment and Consultancy

| Package | Starting Price (USD) |
|----------------------------|----------------------|
| Assessment and Consultancy | 20,000 |

► Project Reference



Nozzle Ring Modification Project
The Siam Cement (Ta Luang) Co., Ltd.
- Khao Wong Plant, Thailand





Contact Information



ECO PLANT SERVICES CO., LTD.

Saraburi Office

1 Moo 9, Ban Krua, Ban Moh,
Saraburi 18270, Thailand

Bangkok Office

Head Quarter Building 1,
1 Siam Cement Rd.,
Bangsue, 10800 Thailand



EcoPlantServices



epsmkt@scg.com



+66 (0)8 079 3225

V11222

www.ecoplantservices.com