

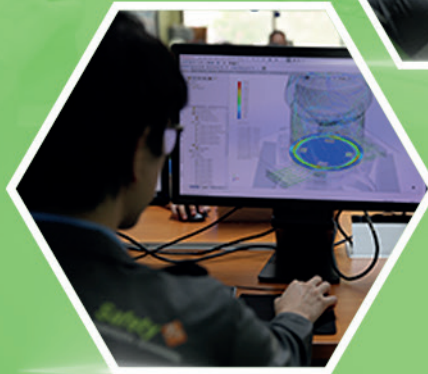


**ASSESSMENT  
& CONSULTANCY**

**NOZZLE RING  
MODIFICATION**

**SUB-ROLLER  
MODIFICATION**

**GRINDING  
SOLUTION**



## GRINDING SOLUTION

Improve mill's performance and machine reliability with grinding solution for raw mill and cement mill designed by EPS professional team in collaboration with "UBE" a world class industrial machinery provider and a pioneer in grinding process.



With strong plant improvement and modification background from cement industry for over 20 years, EPS aims to help our customers in delivering the highest quality products with the greatest efficiency



**IMPROVE  
PRODUCTIVITY**  
Efficiency  
by 5 – 10%



**REDUCE  
PRODUCTION  
COSTS**  
by 3 – 5%



**REDUCE  
POWER**  
Consumption  
by 1.5 – 3%

## Our services



**UBE**

### NOZZLE RING MODIFICATION

Redesign nozzle ring to adjust gas profile of raw mill



**UBE**

### SUB ROLLER MODIFICATION

Modify sub-rollers according to EPS and UBE's design concept to increase productivity, improve product quality and mill stability by reducing water spray consumption of vertical cement mill



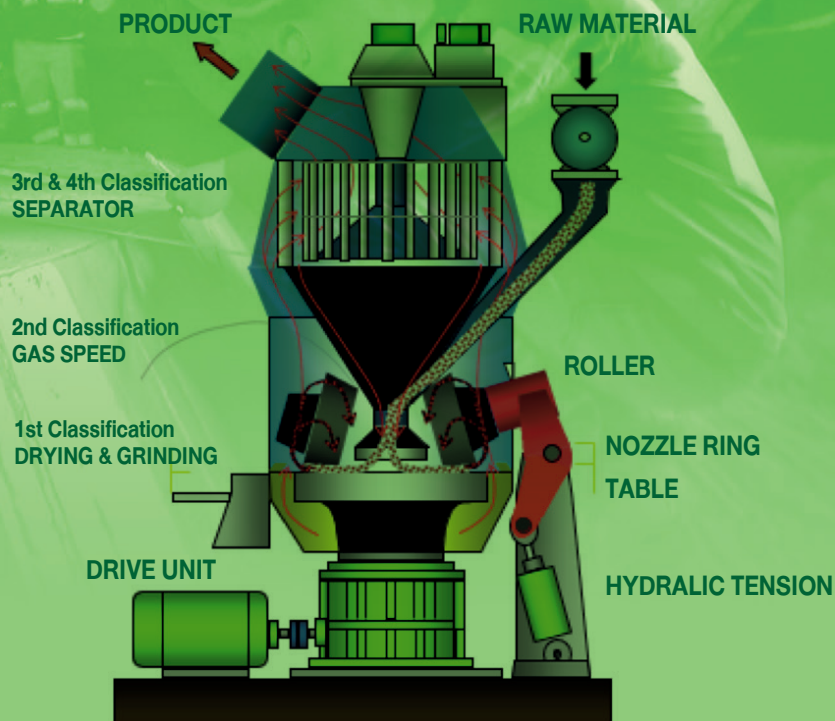
### ASSESSMENT & CONSULTANCY

Assess the current operational performance and propose improvement plan



### ENGINEERING DESIGN AND EXECUTION

for new EPC project or project modification

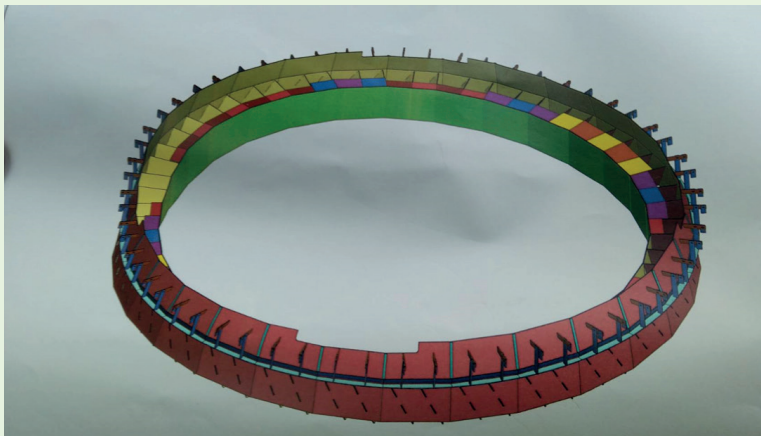
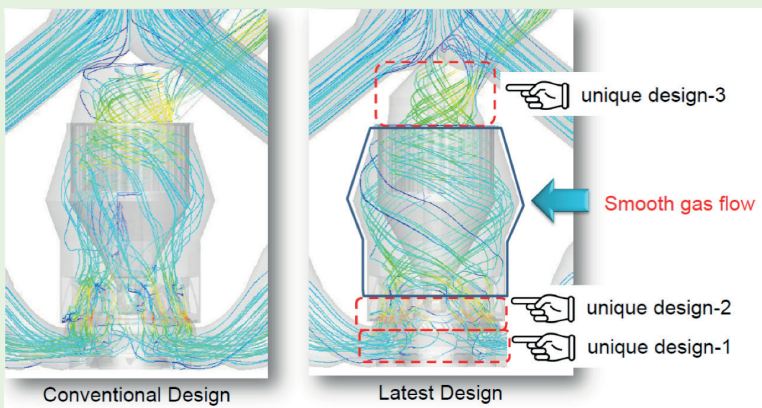


# Solution Package

## ▶ Nozzle Ring Modification

### Scope of Work

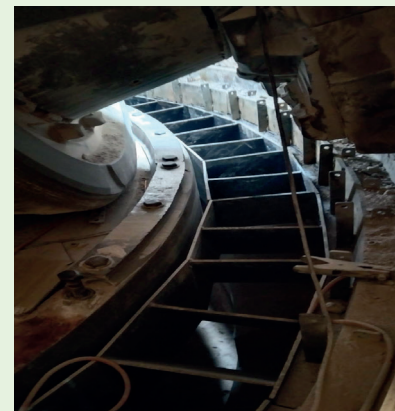
- Assess the current operational performance
- Optimize gas velocity and adjust gas profile in the mill
- Install new nozzle ring



Package	Starting Price (USD)*
Nozzle Ring Modification	150,000

\*Remark : depending on site condition and mill type

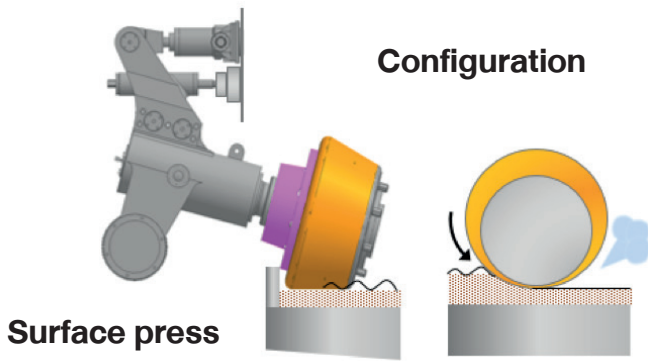
### Nozzle Ring Implementation



## ► Sub-Roller Modification

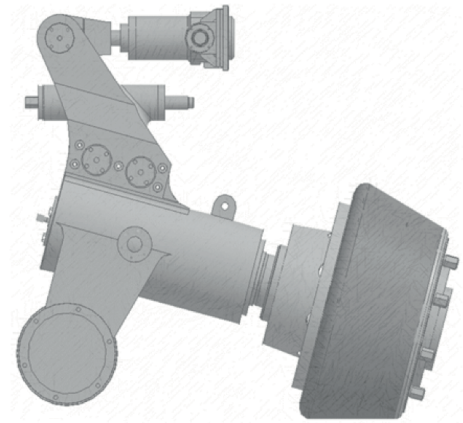
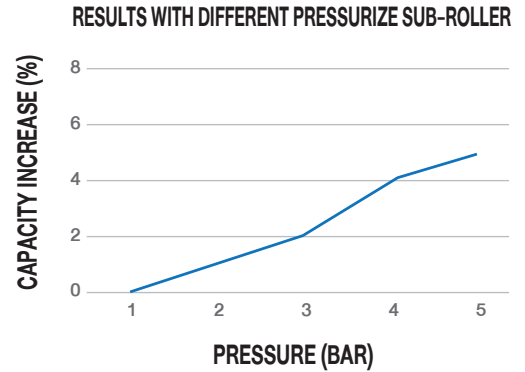
### Scope of Work

- Assess the current operational performance
- Install new modification parts
- Install new stopper and roller tyre
- Modify electrical interlocking system



Package	Starting Price (USD)*
Sub-Roller Modification	400,000

*\*Remark : depending on site condition and mill type*



- Increased mill capacity
- Decrease power consumption of main drive and fan
- Decrease water Consumption

## Additional Service : Assessment and Consultancy

Package	Starting Price (USD)
Assessment and Consultancy	20,000

# ► Project Reference



**Nozzle Ring Modification Project**  
*The Siam Cement (Ta Luang) Co., Ltd.*  
*- Khao Wong Plant, Thailand*





## Contact Information



### ECO PLANT SERVICES CO., LTD.

#### Saraburi Office

1 Moo 9, Ban Krua, Ban Moh,  
Saraburi 18270, Thailand

#### Bangkok Office

Head Quarter Building 1,  
1 Siam Cement Rd.,  
Bangsue, 10800 Thailand



EcoPlantServices



epsmtk@scg.com



+66 (0)8 079 3225

V11222

[www.ecoplantservices.com](http://www.ecoplantservices.com)